



LONGBENTON HIGH SCHOOL

Safeguarding and Child Protection Policy

RESPONSIBILITY:	Headteacher
SLT:	AHT Pastoral
IMPACT ASSESSMENT:	LA Policy
GOVERNING COMMITTEE:	Staffing Sub-Committee
REVIEWED:	September 2017
RATIFIED:	
WEBSITE:	

SAFEGUARDING AND CHILD PROTECTION POLICY GUIDANCE

Contents

INTRODUCTION 3

GOVERNING BODY - CHILD PROTECTION RESPONSIBILITIES..... 4

PART ONE – GOVERNING BODY ACTION PLAN – SAFEGUARDING AND CHILD PROTECTION 5

PART TWO: SAMPLE SAFEGUARDING AND CHILD PROTECTION POLICY 17
(Including reference documents A, B, C, D)

PART THREE – ADDITIONAL REFERENCES FOR THE DSL AND DP DSL’S ONLY 41

Parents reading this document should be clear about our statutory responsibilities outlined on page 3, those of our governing body on page 4 and the expectations of our staff pages 17- 18.

INTRODUCTION

It is imperative that all Schools fully recognise the responsibility they have regarding arrangements for safeguarding and promoting the welfare of children. Those statutory responsibilities are noted within the following legislation:

Section 175 of the **Education Act 2002** states;

- a local education authority shall make arrangements for ensuring that the functions conferred on them in their capacity as a local education authority are exercised with a view to safeguarding and promoting the welfare of children.
- schools and Further Education (FE) institutions should give effect to their duty to safeguard and promote the welfare of their pupils.
- the governing body of a maintained school¹ shall make arrangements for ensuring that functions relating to the conduct of the school are exercised with a view to safeguarding and promoting the welfare of children who are pupils at the school
- an authority or body ...shall have regard to any guidance given from time to time by the Secretary of State

This legislation makes child² protection responsibilities clear and places an obligation on schools to ensure that these responsibilities are met in full.

Safeguarding and promoting the welfare of children is defined in **Working Together (2015)**³ as:

- *protecting children from maltreatment;*
- *preventing impairment of children's health or development;*
- *ensuring that children are growing up in circumstances consistent with the provision of safe and effective care; and*
- *taking action to enable all children to have the best outcomes.*

In addition,

Keeping Children Safe in Education 2016 (KCSE2016) outlines:

Safeguarding and promoting the welfare of children is everyone's responsible. Everyone who comes in to contact with children and their families and carers has a role, to play in safeguarding children. In order to fulfil this responsibility effectively all professionals should make sure their approach is child centred. This means that they should consider, at all times, what is in the best interests of the child.

*School and college staff are particularly important as they are in a position to identify concerns early, provide help for children, and prevent concerns from escalating. **All** school staff should be prepared to identify children who may benefit from early help. Early help means providing support as soon as a problem emerges at any point in a child's life, from the foundation years through to the teenage years.*

¹ Maintained school means a community, foundation or voluntary school, a community or foundation special school or a maintained nursery school. The Education Act 2002 does not specifically refer to Academies; however this duty is equally placed onto Academies by subsequent updated legislation.

² Child means a person under the age of eighteen.

³ Working Together guidance to be revised – likely formal consultation around November 2017, and implementation in early 2018

GOVERNING BODY - CHILD PROTECTION RESPONSIBILITIES

All schools are required to have in place a range of measures which support safeguarding in schools. The child protection policy is one of those measures.

All governing bodies have a responsibility to ensure that child protection, safeguarding and promoting the welfare of children are paramount in how the school operates and are embedded within the schools operating practices and culture including access to early help for children and families.

All governing bodies must therefore ensure the following procedures are in place in accordance with Working Together to Safeguard Children (2015)¹, Keeping Children Safe in Education (2016) (KCSE2016), Local Authority (LA) guidance and locally agreed inter-agency safeguarding procedures.

Please Note: within the guidance where it refers to **ALL** is noted as meaning – all staff, agency workers and volunteers (including Governors). The term DSL and Dp DSL(s) will operate within this document and refer to Designated Safeguarding Lead and Deputy Safeguarding Lead(s).

There are now 2 actions for schools to undertake:

1. The DSL in conjunction with the Dp DSL's to review the action plan below and to assess the school against this action plan. This is not an exhaustive list and is intended to give schools a framework to work within. The points noted in the action plan should not be removed as these are deemed to be the minimum standard that schools should be working to, but schools are recommended to add any additional actions that they are undertaking to ensure effective safeguarding and child protection. Once completed the action plan should be discussed with the Safeguarding Governor and presented to the Governing Body as part of the annual report.
2. The DSL in conjunction with the Dp DSL's to review the guidance provided on safeguarding policy statements and child protection policy/practice. All Schools are required to have in place a child protection policy which clearly demonstrates how child protection matters are managed in school. It is up to each school to have in place a policy which:
 - it has reviewed, adopted and implemented formally
 - has been clearly communicated to staff, agency workers and volunteers (including Governors).
 - is periodically reviewed and updated and re-communicated to staff.

As a school we are able to demonstrate an effective child protection policy and associated safeguarding arrangements in school through completion of **Part One** of this document.

Part Two, our Safeguarding and Child Protection Policy is specific to staff and their actions. There are also a number of additional documents noted for reference in Part Three which contains additional guidance and reference material including some additional information for the use of the DSL and Dp DSL's only.

Part Three of this guidance including some additional information for the use of the DSL and Dp DSL's only.

¹ Working Together guidance to be revised – likely formal consultation around November 2017, and implementation in early 2018

Part One – Governing Body Action Plan – Safeguarding and Child Protection

This action plan is reviewed annually by the DSL in conjunction with the Dp DSL's to review, assess and note progress against this plan. The action plan is also discussed with the Safeguarding Governor and presented to the Governing Body as part of the annual report.

Action	Comment	When was this action implemented at School?
Safeguarding Policy	<p>Within our school we have in place a safeguarding policy which applies across the whole school and confirms what we do for all children. We define safeguarding to include the overall culture and ethos we follow in school, which is child centred and ensures that at all times we work in the best interests of the child to ensure that school is a safe place for all of our children and young people to be.</p> <p>We define Child Protection as what we do for children at risk of significant harm, or who have been significantly harmed and we have separate clear procedures which are understood by ALL in place for this.</p> <p>In drafting our safeguarding and child protection policy, procedures, practices and guidance, we utilise the expertise of our staff in shaping our policies and provide opportunities to do this.</p>	New Policy September 2017
Early Help	<p>Within our school we have in place procedures to ensure all children and families are supported as soon as a problem emerges and at any point in a child's life. This is through early help, intervention and prevention using the locally agreed Early Help Pathway (see Guidance Document E, Early Help Assessments (EHAs) and contact with our Local Integrated Teams.</p>	System in place. EHAs completed on a regular basis, as and when needed then shared with relevant professionals.
An effective <u>Child Protection Policy and associated procedures</u> are in place in school and reviewed not less than every 12 months.	<p>We have in place a child protection policy with supporting relevant procedures.</p> <p>We are able to demonstrate that ALL:</p> <ol style="list-style-type: none"> 1. have received a relevant and appropriate induction that includes child protection arrangements.¹ 2. have access to, understand, know its location and are clear on how it relates to them in their role in school and how it relates child protection practices which operate in school. 3. know the child protection policy is embedded in the actual operating practices which are in place in school. 4. know the child protection policy is subject to periodic updates for all adults 'working'¹ in school - in 	<p>New Policy September 2017</p> <p>Relevant documentation shared and staff contracts completed.</p>

¹ It is a statutory requirement in school for all new staff to be advised of the code of conduct and child protection policy as part of induction.

	<p>particular, after it has been reviewed by the governing body (annually and/ or following a required review).</p> <p>5. Are aware of who the DSL and the Dp DSL's are and clearly understand their and their own role and responsibilities within the application of the child protection policy.</p>	
Access to the Child Protection Policy – Non Staff	The Child Protection Policy is made available to parents/carers and an up to date copy is maintained on the school's website.	New Policy September 2017 updated on the website September 2017
Whistle Blowing Policy	<p>We have in place an effective Whistle Blowing Policy that ALL have access to, understand, know its location and are clear on how it relates to their role in school and how it relates to the child protection policy and operating practices which are in place in school.</p> <p>A copy of this policy is on the schools IT system where staff can access it (for those staff that cannot access this easily, paper reference copies are placed in the staff room where all staff can access them. Alternatively staff can also contact our Office/Business Manager who will ensure that they are provided with a paper copy for reference). The policy is reviewed at least annually by the Governing Body and updated/re-briefed to all staff as part of our annual CPD/Staff training programme.</p>	Policy shared with staff again in September 2017 during CP update training. Following this it was then made available via staff IT system.
Whistle Blowing Helpline	<p>ALL are also made aware that a Whistle Blowing Helpline line was set up by the NSPCC in February 2016 and are aware that the help line was <u>not</u> intended to replace current practices or responsibilities of organisations working with children.</p> <p>ALL are aware that the help line advisors will always encourage professionals to raise any concerns about a child to their own employer in the first instance.</p> <p>ALL are aware that the advice line is being seen as an alternative route if whistle blowing internally is difficult or professionals have concerns around how matters are being handled. All are therefore aware that they have a personal responsibility to understand that this help line is in place and their own responsibilities in relation to this.</p> <p>The help line number is noted in the list of contact details that school provide to ALL in accordance with the application of our child protection policy and its associated procedures and practices.</p>	This information was shared in September 2017 CP training to staff and is within this document (p33)

¹ 'working' in this instance does not mean employment – this relates to all of those adults who are directly employed by the school, placed via an agency/supply organisation or a volunteer – including governors, who have access to children/young people (or who could by the very nature of what they do, or the time the spend in school could result in them being viewed by children as being a 'safe' adult in school).

<p><u>Code of Conduct/Staff Behaviour Policy</u></p>	<p>We have in place a code of conduct/adult behaviour policy.</p> <p>We are able to demonstrate that ALL:</p> <ol style="list-style-type: none"> 1. have been issued with a copy of the document and understand how it relates to their role in school. 2. have received induction¹ training that they have been provided with a copy of this document and have been guided through the document by either the DSL, Dp DSL or their mentor/buddy so that they clearly understand the expectations school places upon them in relation to their behaviour/conduct in their role in school. 3. Additionally, as part of our CPD programme - Code of Conduct/Behaviour, Allegations Management and Safer Working Practices are part of our rolling programme of updates provided to staff on an annual basis. 	<p>Code of conduct in place and shared with staff September 2017.</p> <p>Safer working practices also shared with staff and part of the school CP contract.</p>
<p>There are effective practices in place which support the operation of the <u>Safer Working Practices for Adults who work with Children and Young People</u></p>	<p>Guidance is available from the Safer Recruitment Consortium made up of NSPCC, Lucy Faithfull Foundation, National Association of Special Schools and Child Protection in Education Foundation and is available via our IT system.</p> <p>We confirm that this guidance applies to ALL and forms part of a relevant and appropriate induction.</p> <p>We have in place our own guidance document and be able to demonstrate that this has been issued to ALL and that individuals have been supported to understand its content, what this means to them in their role in school and what is expected of them.</p> <p>This document is subject to periodic reviews and once it has been reviewed we ensure that ALL are updated/re-reminded of the content therein.</p> <p>Additionally, as part of our CPD programme - Code of Conduct/Behaviour, Allegations Management and Safer Working Practices are part of our rolling programme of updates provided to staff on an annual basis.</p>	<p>Documentation is in place and available to staff to view via the school IT system.</p>
<p>There are practices in place which support <u>Keeping Children Safe in Education (2016)</u></p>	<p>This specifically relates to Part One of this document which is noted as apply to all staff. School leaders and those staff who work directly with children should also read Annex A of the document.</p> <p>This document is issued/provided to ALL (i.e. not just staff) and forms part of a relevant and appropriate induction. Additionally, Part One of KCSE 2016 is also a key part of our annual CPD programme for all staff where we ensure that we support ALL to understand their role and responsibilities.</p> <p>We are aware of this document and ensure we directly</p>	<p>KCSIE September 2016 shared with staff during CP training September 2017, emphasis clear to staff of their roles and responsibilities.</p>

¹ It is a statutory requirement in school for all new staff to be advised of the staff code of conduct and child protection policy as part of induction.

	<p>access any changes/updates that are made at a national level and ensure that once it is updated we:</p> <ol style="list-style-type: none"> 1. reflect those changes within the documents and practices which operate in school in relation to child protection, and 2. re-issue/provide copies to ALL 3. discuss in detail how ALL identify and gain support to identify concerns early, provide help for children and prevent concerns for escalating. 4. ALL are aware of the referral process which operates within school (and as noted in KSCE2016 Part ONE Paragraphs 21-28) 5. continue to use with ALL as part of our ongoing CPD programme and have mechanisms in place to ensuring that ALL <i>read and understand</i> the content therein, by regularly discussing any changes/updates and advise/confirm/remind how this applies to them in their role in school. 6. provide support to staff on a periodic basis via email updates, alerts, in-house staff updates/briefings provided by the DSL as part of our CPD programme. 7. consider the use of public alerts from GOV.UK linked to National College of Teaching & Learning and use the content therein appropriately to discuss those cases and to ensure that all staff are aware how we prevent such a situation occurring in our school. 	
School operates Safe Recruitment practices	<p>We have in place an effective Recruitment & Selection Procedure which follows the guidance to support Safe Recruitment practices which comply with Part Three of KCSE 2016 and that these Recruitment & Selection practices apply equally to ALL.</p> <p>All recruitment panels include at least one member of the leadership team and/or a school governor who have taken part in safer recruitment training (and/or the 5 year refresher).</p> <p>We ensure that all appropriate and relevant checks are carried out in an effective and timely manner on ALL who will work with children before they are appointed to a role in school.</p>	System in place
Induction	<p>We have in place an effective and appropriate Induction process for ALL.</p> <p>Each induction process is tailored to the role that the individual undertakes in school and a nominated person and/or buddy is responsible for supporting the induction process – which can last up to 12 months (normally by the curriculum Leader).</p> <p>We determine and operate an ‘induction checklist’ which is able to support and evidence the practices, which operate in school relating to child protection and supports individual’s to operate effectively within school in relation to child protection and safeguarding.</p>	Induction process in place

	<p>3 key areas linked to safeguarding which are included in our induction checklist for ALL are:</p> <ul style="list-style-type: none"> • the child protection policy; • the staff code of conduct • the role of the designated safeguarding lead (in accordance with Annex B of KCSE2016). <p>Copies of policies and a copy of Part ONE and where necessary Annex A KCSE 2016 are not only provided to ALL but the DSL/Dp DSL also arranges to meet with each new member of staff, governor or volunteer (*) following their appointment to ensure that they are also clear on their role and responsibilities in safeguarding children.</p> <p>The 'induction checklist' which is tailored and timed to suit the role that the individual is undertaking within school, is updated to record progress through the 'induction checklist'.</p> <p>We actively use induction and probationary periods to ensure that individuals who are appointed to roles in school are actively and effectively managed to ensure that they operate within schools policies, practices relating to safeguarding and child protection and conduct/behaviour policies.</p> <p>(* we have in place an equally robust and tailored induction checklist for agency workers linked to the role they are coming into school to undertake and the duration of that role).</p> <p>Additionally we also work with service providers whose staff are based on our school site, (e.g. catering and cleaning services) to ensure that an effective induction and how this aligns with our safeguarding policies and culture.</p>	
Staff Handbook	<p>We have in place a Handbook for employees which clearly documents¹ all of the relevant polices and practices that operate within school and that employees need to be aware of.</p> <p>The Employee Handbook includes a section on child protection and safeguarding.</p> <p>The Employee Handbook notes the nominated person(s) in school who are designated to be responsible for child protection.</p> <p>The Employee Handbook is drafted to support all staff</p>	Handbook available electronically to staff via school IT system.

¹ Copies of document may be provided to staff and agency workers in paper format – either in full or consolidated including a link to the main document. Alternatively they could be placed into a printed document that individuals can be issued with and carry with them. It will be up to each school to determine what practice will work best for them. It may be that schools operate with a Handbook for those staff they directly employ and those staff who are placed with them via an Agency.

	that are employed to work in school and will be tailored to ensure that it can support those individuals directly employed by the school and those directly employed via an agency, but placed in school.	
Volunteer Handbook	<p>We have in place a Handbook for volunteers which clearly documents¹ all of the relevant policies and practices that operate within school and which volunteers should be aware of in relation to child protection and safeguarding.</p> <p>The Volunteer Handbook notes the nominated person(s) in school who are Designated to be responsible for child protection.</p> <p>The Volunteer Handbook is drafted to support all volunteers who come into school to provide support with children/young people, the wider school community, or curriculum support.</p>	Volunteer Handbook available from September 2017
Job Descriptions and Person Specifications	<p>As part of the schools Safe Recruitment practices all job descriptions and person specifications include an appropriate and relevant child protection responsibility.</p> <p>We have in place job descriptions/role outlines for ALL roles within schools.</p> <p>The DSL and Dp DSL also have specific job descriptions relating to their role in school (in accordance with Annex B of KCSE2016).</p>	In place September 2017
DBS Checks – Staff and Agency Workers	<p>We have in place a policy which ensures that ALL are subject to relevant and appropriate DBS checks for the role that they are undertaking within school.</p> <p>We ensure that ALL understand the requirement to have a valid DBS check in place and that they must notify school if their DBS status changes and that they are to notify school immediately.</p> <p>We are aware that DBS checks may also include a 'barred list' check (List 99 as was). At appointment we have a clear process in place that determines the level of DBS check undertaken, e.g. Enhanced DBS (with barred list) or a Standard DBS (without barred list) and this is referenced in our DBS policy.</p> <p>We operate an Annual Update/Reminder Programme for DBS.</p> <p>We have a separate DBS policy in place for Governors which came into effect in April 2016 (see below).</p>	System in place September 2017

¹ Copies of document may be provided to volunteers in paper format – either in full or consolidated including a link to the main document. Alternatively they could be placed into a printed document that individuals can be issued with and carry with them. It will be up to each school to determine what practice will work best for them. It may be that schools operate with a Handbook for those volunteers that will be with them on a more established/longer terms basis, e.g. governing body member, versus those volunteers who may be with school for a short term or as a 'one-off' situation, e.g. relative (parent/grandparent/carer) helpers who may only link in with school for a school trip or to help with a specific project/curriculum area.

<p>DBS Checks – Volunteers including Maintained School Governors</p>	<p>We have in place a policy which ensures that all volunteers undertake a DBS check before they are appointed to school and that these checks are subject to an Annual Update/Reminder Programme.</p> <p>For Governors we follow the April 2016 guidance which notes that a DBS check without barred list ¹check will be undertaken for Governors within 21 days of their appointment.</p>	<p>System in place September 2017</p>
<p>European Economic Area (EEA) requiring the sharing of information</p>	<p>We have in place a policy which checks whether or not a teacher who has trained or worked in the European Economic Area (EEA²) has received any restrictions on their teaching.</p> <p>We ensure that this information is recorded within our Single Central Register (SCR) – see below.</p>	<p>System in place September 2017</p>
<p>Prohibition Checks</p>	<p>We are aware that there are ‘3 prohibition checks in place for teaching staff’.</p> <ol style="list-style-type: none"> 1. Barred list check – which is considered when a DBS is applied for 2. Teachers prohibition 3. Prohibition from Management 	<p>System in place September 2017</p>
<p>Prohibition Checks: Teachers</p>	<p>We are aware that from September 2113, under the School Staffing Regulations (amended) 2013, a check was put in place to ensure that schools made sue that anybody coming into their school was not Prohibited from Teaching or indeed under an interim Prohibition Order.</p> <p>We ensure that we undertake this in addition to DBS checks for teaching employees.³</p> <p>We also consider the relevance of a Prohibition Check for a non-teaching/volunteer post where the applicant has previously worked/qualified as a teacher. Each appointment panel/process are responsible for ensuring that this is considered and/or undertaken.</p>	<p>System in place September 2017</p>
<p>Prohibition from participation in Management (*)</p> <p><i>(* this only applies to independent school, academy or free school)</i></p>	<p>We operate a policy in school where anyone appointed to a management position as an employee, trustee or proprietor are checked to ensure they have not been barred from management of an independent school by the Secretary of State.</p> <p>This additional check is in accordance with Section 128 provisions</p> <p>This check is undertaken as part of the enhanced DBS or if the person is not in regulated activity via Employer Access.</p>	<p>System in place Sept 2017</p>

¹ KCSE16 – para 128 – ‘governance is not regulated activity and so governors do not need a barred list check unless, in addition to their governance duties, they also engage in regulated activity.’

² EEA is the countries of the EU, plus Iceland, Leichtenstein and Norway.

³ This will either be undertaken by our school or via the organisation who undertakes the DBS checks on our behalf.

<p>Disqualification by Association Regulations</p> <p>(currently there is a DFE consultation exercise in place on the above, however at the time of concluding the drafting the results for this had not been published)</p>	<p>Where the Regulations apply, all relevant staff are subject to these Regulations as part of the Recruitment/ Selection and Appointment process and are reminded that should the status of those that live in their household change¹, they need to notify school.</p> <p>We ensure that assurance is sought for the placing agency that all agency workers have been subject to the Regulations.</p> <p>All staff and agency workers, where the Regulations apply, are subject to an Annual Update/ Reminder Programme.</p>	
<p>DBS Risk Assessments</p>	<p>In the event that any DBS provides trace data an appropriate risk assessment is undertaken by the Head Teacher and a decision regarding continuation is taken in conjunction with the Chair of Governors.</p> <p>A signed copy of the risk assessment (which is counter signed by the Chair of Governors or their designate) is placed confidentially onto the personal file held at school.</p> <p>The fact that there has been a trace and a decision, will need to be noted. School have in place a system which allows for this information to be recorded on the SCR.</p>	<p>System in place September 2017</p>
<p>Single Central Record (SCR)</p>	<p>We have in place an effective and robust SCR which is maintained on a timely basis.</p> <p>There is a designated person who is responsible and accountable for the data held within the SCR, its timely updating and the quality of the data held therein. This individual(s) clearly understands the importance of the SCR and their role and responsibilities linked to this.</p> <p>We have a nominated Safeguarding Governor who will review termly a copy of the SCR² and a report is presented to the Governing Body on an annual basis as part of the overall report on how Safeguarding and Child Protection operate in school confirming that the SCR alongside other policies, procedures and practices is in place and is operating effectively.</p> <p>We are aware of updates provided and referenced in briefings and noted in the SCR Guidance Handbook (September 2017).</p>	<p>System in place September 2017</p>
<p>Procedures are in place for dealing with allegations of</p>	<p>In accordance with Part 4 of KCSE2016, we operate to this guidance when dealing with allegations of harm/abuse against children/young people.</p>	<p>System in place September 2017 both DSL</p>

¹ Disqualification Regulations status change could relate to change of those who live in the same house and the employee of the age of those who live in the same house changing, e.g. a young person's age changes to 18 and they become eligible to be subject to the Disqualification Regulations.

² SCR holds personal data irrespective of how straightforward it appears, this is still governed by Data Protection legislation and therefore should not be viewed unnecessarily. In accordance with similar practices which operate in school in relation to performance management, Governors will review data to assure themselves that appraisal and performance management is operating effectively. A similar protocol should be in place when an SCR is reviewed on an annual basis. The safeguarding governor's role is to ask questions to gain assurance that the school has in place an effective SCR and that the staff member assigned this responsibility is clear on the correct procedures, operates to these procedures and the SCR is being maintained and managed effectively.

<p>harm/abuse against children/young people</p>	<p>Our DSL is aware of the above policies, how they fit into our over arching responsibilities linked to safeguarding and child protection and how these operate in practice.</p> <p>Our DSL has ensured that the Dp DSL(s) are equally aware with the above policies how they fit into our over arching responsibilities linked to safeguarding and child protection and how these operate in practice.</p> <p>Our staff are aware of their role and responsibilities in accordance with paragraphs 31 to 34 in KCSE 2016 and we issue all staff with a copy of Reference Document B – actions where there are concern about a child - which is attached to our child protection policy</p> <p>Additionally, as part of our CPD programme - Code of Conduct/Behaviour, Allegations Management and Safer Working Practices are part of our rolling programme of updates provided to staff on an annual basis.</p>	<p>and other Dp DSL(s) are aware of the responsibilities and how these operate in practice</p>
<p>A senior member of the school's leadership team is designated to take lead responsibility for dealing with child protection issues.</p>	<p>We have a named DSL within the Senior Leadership Team in School who is responsible for child protection and safeguarding.</p> <p>The individual who holds this role:</p> <ol style="list-style-type: none"> 1. is aware that their responsibilities cannot be delegated, but they can be distributed to Dp DSL's and has put in place a framework which is clear to ALL on the role and responsibilities of both the DSL and the Dp DSL's. 2. is responsible for providing advice and support to all other staff, liaising with and working with other agencies; 3. is trained in Child Protection matters as agreed locally with North Tyneside Safeguarding Children Board (NTSCB) 4. directly supports those staff members who are also nominated by the school to be Dp DSL's for child protection purposes – in relation to CPD, case management and support. 5. is responsible for ensuring that school has in place all relevant policies and procedures relating to child protection and safeguarding and that these are periodically updated and reviewed in light of changes to practice, guidance and legislation. 6. ensures they link in with the governing body member nominated for safeguarding and child protection and ensures that with them, an annual report is provided to the governing body noting the schools approaches to child protection/ safeguarding. 7. ensures that they themselves and the Dp DSL's are aware of who the Designated Officer is within the Local Authority (referred to as <i>LADO</i>) and the requirements to report into and work with them on all relevant matters. 	<p>System in place September 2017</p>

	<p>8. is responsible for ensuring that all staff are issued with a list of the DSL and the Dp DSL's within school and the relevant contacts within the local authority, as well as emergency/other agencies. That this document which is included in the schools child protection policy is issued to ALL and is subject to periodic updates.</p> <p>In drafting our safeguarding and child protection policy, procedures, practices and guidance we utilise the expertise of our DSL in taking the lead to implement an effective policy in school which reflects our practice and in ensuring that our staff are included in shaping our policies and provide opportunities to do this.</p>	
Staff Training	<p>The DSL and the Dp DSL's will undertake training to provide them with the knowledge and skills required to carry out their role through accessing the NTSCB training programme which should be updated every 2 (two) years.</p> <p>In addition to this formal training DSLs and Dp DSL's will access regular (but at least annual) updates (for example, via email, e-bulletins and staff meetings). It is the responsibility of the DSL to ensure that this takes place for themselves and any Dp DSL's and to pick up any further areas of support as necessary</p> <p>All new staff will be provided with child protection training to ensure that they understand how safeguarding and child protection operates in our school. It is the responsibility of the DSL to ensure that this takes place and to pick up any further areas of support as necessary</p> <p>All other staff who work with children will refresh this formal training every 3 (three) years in line with advice from NTSCB.</p> <p>This formal training will be in addition to regular staff updates which will be provided to ALL at least annually. It is the responsibility of the DSL to ensure that this takes place and to pick up any further areas of support as necessary. As part of this process we will include 5 key questions to help both staff and school identify any further learning opportunities:</p> <ol style="list-style-type: none"> 1. what have you learnt (today) that you did not know before? 2. What did you know before, but now see this in a different way? 3. What further questions, has this session prompted you to ask? 4. What's the one thing you're going to do differently from now on? 5. What additional training/updates/support would you like to receive going forward? <p>All agency workers placed in school will receive</p>	System in place September 2017. Four members of staff are fully trained

	<p>appropriate safeguarding and child protection induction when they commence in school. These updates will be added to further as the placement in school continues. We have different levels of updates/guidance linked to the role to be undertaken and the duration of the role. The DSL is responsible for ensuring that an effective programme of safeguarding and child protection updates are in place for all agency workers.</p> <p>Additionally we also work with service providers whose staff are based on our school site, (e.g. catering and cleaning services) to ensure they are included in training/updates (and/or their employer/manager supports them with training/updates) to ensure that their knowledge and understanding continues to align with our safeguarding policies and culture.</p>	
Safeguarding Governor	<p>We have in place a governing body member who is identified as being the lead governing for safeguarding and they are aware of their role and responsibilities and the scope of that role.</p> <p>The safeguarding governor works with the DSL to ensure that an annual report is presented to the Full Governing Body noting the policies, procedures and practices that we have in place to support child protection and a safeguarding culture operating effectively within school.</p> <p>All governors will be invited to attend all staff annual CPD updates in relation to safeguarding and child protection. It would be good practice for the safeguarding governor and chair of governors to attend their whole school training and any updates from the DSL but if not available, should access these through other mechanisms.</p>	<p>System in place September 2017.</p> <p>Safeguarding governor in place for two years – report to be shared with the governing body during Autumn Term 2017.</p>
Visitors Protocol	<p>We have in place a protocol for visitors on their arrival at school. This is consolidated into the visitors 'signing-in' process which operates in school and ensures that all visitors are aware of the schools standards of behaviour/expectations of visitors when they are on the school site. Visitors will wear either black or red lanyards – red lanyards signify that they should always be accompanied during their time in LHS.</p> <p>The signing in protocol includes child protection and also notes the schools expectations of visitors in the context of the schools wider safeguarding arrangements.¹</p>	System in place September 2017
Practice reviews	<p>The DSL and Dp DSL's periodically, but at least annually review the practices we operate in school to ensure that each DSL and/or Dp DSL operates at a consistent and effective level.</p> <p>Additionally, the DSL is responsible for coaching and</p>	System in place September 2017

¹ For those schools that access ENGIE/North Tyneside Partnership Schools HR services a sample document is provided. The last updated guidance for schools to consider (reviewed in April 2016) remains a relevant reference tool.

	supporting each Dp DSL when they are managing cases and this is also factored into any formal support and development processes, e.g. appraisal.	
Record Keeping and Handover	<p>All concerns, discussions and decisions made relating to a child/young person and the reasons for those decisions are recorded in writing and held confidentially in secure files in school.</p> <p>Guidance is given in accordance with paragraph 29 of KCSE2016 by the DSL to staff so they are clear on what should and should not be recorded in writing including all concerns discussions and decisions made and the reasons for those decisions. This guidance is reviewed on a periodic basis as and when new guidance is issued, legislation changes or learning from practices operating in school necessitate a need for updates.</p> <p>All staff are aware of the need to maintain confidentiality but that where a child discloses information that they can never promise a child that they will not tell anyone about an allegation – as this may ultimately not be in the best interests of the child.</p> <p>In the event of a DSL leaving school or no longer holding the role, appropriate mechanisms are in place for an effective and detailed handover to the next DSL to be in place.</p>	System in place September 2017
Section 11 Audit	The DSL is required to take a lead role in the completion of the Section 11 Audit and to ensure that this is completed and returned to the North Tyneside Local Safeguarding Children’s Board (NTSCB) within the timeframes required.	System in place September 2017. Last audit provided to NTSCB Dec 2016.
Additional Policies	<p>In addition to the documents listed within this action/assessment plan, we have in place effective policies and practices to further support the operation of our safeguarding and child protection policies, this will include but is not limited to:</p> <ul style="list-style-type: none"> • allegations of peer to peer abuse, • policies in place which specifically relate to a Looked After Child (LAC) and we also have in place a designated teacher for LAC • clear policies in guidance to support SEND children and young people in school and a member of staff is designated to be responsible and accountable for the effective overarching support of those children and young people <p>We also have in place a review protocol to ensure that all additional guidance and policy is reviewed periodically (at least annually) by the DSL/Dp DSL’s to ensure they remain operationally effective.</p>	Relevant policies and practices in place September 2017

Part Two: Safeguarding and Child Protection Policy

LONGBENTON HIGH SCHOOL

In school we have in place both a Safeguarding Policy and Child Protection policies.

SAFEGUARDING POLICY

We define safeguarding as being broader than 'child protection'. Safeguarding in our school confirms what we do for all children, applies across the whole school and is linked to our overall culture, ethos and the principles we follow in school. Safeguarding in our school is child centred and ensures that at all times we work in the best interests of the child to ensure that school is a safe place for all of our children and young people to be.

We define Child Protection as what we do for children at risk of significant harm, or who have been significantly harmed and we have separate clear procedures which are understood by ALL in place for this.

We define children and young people in our school as being children within the age ranges of 11 to 19 years, however we are aware that children includes everyone under the age of 18.

As appropriate, to safeguard any young person who is over the age of 18 who continues to receive education in our school, we operate in accordance with local guidance and will report suspicions/allegations of abuse or neglect to the Adult Social Care Gateway Team on 0191 6432777.

We accept and expect ALL in school to understand that safeguarding is everyone's responsibility. Safeguarding is defined in Working Together to Safeguard Children 2015¹ as:

1. protecting children from maltreatment
2. preventing impairment of children's health and development
3. ensuring that children grow up in circumstances consistent with the provision of safe and effective care and
4. taking action to enable all children to have the best outcomes

In school we act in the best interest of all children and ensure we take all reasonable steps to prevent them from harm. Having appropriate safeguards in place not only protects and promotes the welfare of children/young people, but also enhances the confidence of pupils, staff, volunteers and parents/carers. Therefore, safeguarding arrangements should be considered in conjunction with the procedures outlined in Reference Document D

¹ Working Together guidance to be revised – likely formal consultation around November 2017, and implementation in early 2018

The Child Protection Policy

Our child protection policy demonstrates our commitment to safeguard children from harm. The essential inclusions within our child protection policy are outlined below:

Principles	<ul style="list-style-type: none"> • the welfare of the child is paramount • we are clear on reference to principles, legislation and guidance that underpin the policy • we are clear that the policy applies to ALL working with or supporting children within our school and ALL are clear on their role and responsibilities • all concerns and allegations of abuse will be taken seriously by governors, staff and volunteers and responded to appropriately - this may require a referral to children's social care services, the Designated Officer for the Local Authority (referred to as <i>LADO</i>) and as appropriate the policy • arrangements are in place for the policies and the supporting procedures and updates to be reviewed regularly to ensure that they reflect good/current practice • reference to all associated policies and procedures which promote children's safety and welfare e.g. with regards to: health and safety, anti-bullying, protection of children online.
Equality of Application	<ul style="list-style-type: none"> • no child or group of children must be treated any less favourably than others in being able to access education which meets their particular needs • all children without exception have the right to protection from abuse regardless of gender, ethnicity, disability, sexuality or beliefs
Up to Date	our policy is reviewed, approved and endorsed by the Governing Body annually or when legislation changes
Recruitment	we operate an effective safe recruitment, selection and vetting procedure in accordance with Part Three of KCSE2016
Communication	children and parents/carers are informed of the policy and procedures and a copy of placed on the school website

Child Protection Procedures and Systems

These are the procedures and systems which provide clear step-by-step guidance on what to do in different circumstances and they clarify roles and responsibilities. Systems for recording information and dealing with complaints are also in place to ensure implementation and compliance.

Our child protection procedures are linked to the [North Tyneside's Safeguarding Children Board's \(NTSCB\) procedures](#). Our procedures and systems include:

Responsibility	a named senior designated safeguarding lead (and deputy/ies) with a clearly defined role and responsibilities in relation to child protection, appropriate to the level at which they operate
Clarity of Understanding	a description of what child abuse is, and the procedures for how to respond to it where there are concerns about a child's safety or welfare including the need for early help or concerns about the actions of a governor, staff member or volunteer
Responsibilities are clearly understood	<ul style="list-style-type: none"> • relevant contact details for children's services, police, health, the Designated Officer for the Local Authority (referred to as the LADO), Child Exploitation Online Protection Centre (CEOP) for eSafety concerns and NSPCC help lines are made available to ALL • a code of behaviour for governors, staff and volunteers; the consequences of breaching the code are clear and linked to disciplinary and grievance procedures • safe recruitment^[1], selection and vetting procedures that include checks into the eligibility and the suitability of all governors, staff and volunteers who have direct or indirect contact with children • systems to ensure that all staff and volunteers working with children are monitored and supervised and that they have opportunities to learn about child protection in accordance with their roles and responsibilities; safeguarding induction training is now mandatory for all those who work directly with children, young people, their families and/or carers • requirements for governors, staff and volunteers to learn about child protection in accordance with and as appropriate to their roles and responsibilities, including but not limited to the emerging issues of eSafety, domestic violence^[2], forced marriage, female genital mutilation, children who live away from home or go missing, child sexual exploitation, race and racism and extremism. • School understands their responsibility in line with the Prevent Duty (2015) and are able to identify children who may be

^[1] In accordance with Part Three of KCSE2016

^[2] Including engagement with the Operation Encompass scheme between police, children's social care and schools

	<p>vulnerable to radicalisation, and know what to do when they are identified. School also builds pupils' resilience to radicalisation by promoting fundamental British values and enabling them to challenge extremist views. Pupils are encouraged to debate controversial issues and provides a safe space in which pupils and staff can understand the risks associated with terrorism and develop the knowledge and skills to be able to challenge extremist arguments. All DSLs and their deputies should attend a Workshop to Raise Awareness of Prevent (WRAP).</p> <ul style="list-style-type: none"> • our safeguarding policy and procedures are tailored to our children and their needs and take into account any particular vulnerabilities of the children with whom we have contact, including those who are at increased risk of abuse due to either their age and/or dependence on adults including being part of the Operation Encompass scheme running in the local authority. Operation Encompass ensure that following any domestic abuse incident being reported to the police, the police will make contact with Children's Social Care Front Door service who will then communicate relevant and necessary information to our nominated school staff the next morning. This will ensure our school is made aware at the earliest possible opportunity and can subsequently provide support to our pupils in a way that means they feel safe and listened to.
Record Keeping/ Confidentiality	<ul style="list-style-type: none"> • a process for recording incidents, concerns and referrals and storing these securely in compliance with relevant legislation and kept for a time specified by other partners. • guidance on confidentiality and information sharing, legislation compliant, and which clearly states that the protection of the child is the most important consideration.

CHILD PROTECTION POLICY

INTRODUCTION

There are four main elements to our child protection policy:

1. **PREVENTION** through the teaching and pastoral support offered to pupils and the creation and maintenance of a whole school protective ethos.
2. **PROCEDURES** for identifying and reporting cases, or suspected cases of harm/abuse.
3. **SUPPORT TO PUPILS** who may have been harmed/abused.
4. **PREVENTING UNSUITABLE PEOPLE WORKING WITH CHILDREN** including staff, agency workers, volunteers (including Governors), community education staff, other professionals and other visitors who may be working in school or coming into contact with children/young people.

1. PREVENTION

The safety and well-being of all of pupils is our highest priority. It is our responsibility to:

- know every child and young person as an individual
- provide a secure and caring environment

so that every child and young person can:

- learn in safety
- develop his/her full potential, and
- feel positive about him/herself as an individual.

To achieve this we recognise that high self-esteem, confidence, supportive friends and good lines of communication with a trusted adult helps prevention.

In school we will therefore:

<u>Adults</u>	<u>Children/Young People</u>
<ul style="list-style-type: none">• provide induction which includes relevant information on child protection to ensure that individuals understand and discharge their role and responsibilities, to include but not be limited to the Child Protection Policy, Code of Conduct/Behaviour Protocol, role of the Designated Safeguarding Lead (DSL) and any deputies• provide induction training that is structured to ensure all new staff, agency workers and volunteers (including Governors) can attend appropriate child protection training as soon as reasonably	<ul style="list-style-type: none">• ensure children/young people know that there are adults in school whom they can approach if they are worried or in difficulty• establish and maintain an ethos where children/young people feel secure, are encouraged to talk and are listened to• encourage and reinforce essential skills for every child/young person such as self esteem, confidence building, independent thinking and making assessments of risk based on their own judgements and help children/young people develop realistic

<p>possible after their appointment</p> <ul style="list-style-type: none"> • provide all staff with regular safeguarding and child protection updates (at least annually) which is in line with advice and changing practice – both nationally and from the North Tyneside Safeguarding Children Board (NTSCB) • ensure that all staff receive training endorsed by the NTSCB on child protection at least every three (3) years • ensure that the DSL (s) and/or deputies attend (NTSCB) Multi-Agency Training every two (2) years • in addition to DSL formal training and any general staff updates, the DSL (and deputies) are supported to update their knowledge and skills (e.g. via e bulletins, meeting other DSL's or taking time to read and digest safeguarding developments) at regular intervals but at least annually. • we also encourage the inclusion of service provider teams who are based on site being included in training and/or updates. 	<p>attitudes to the responsibilities of adult life</p> <ul style="list-style-type: none"> • include activities and opportunities in the curriculum which equip children/young people with the skills they need to stay safe from harm/abuse and to know to whom to turn for help • children are taught about safeguarding, including online, through teaching and learning opportunities, as part of providing a broad and balanced curriculum. This may include covering relevant issues through personal, social, health and economic education (PSHE) including sex and relationship education (SRE) • ensure that appropriate filters and monitoring systems are in place but that “over blocking” does not lead to unreasonable restrictions as to what children can be taught with regards to online teaching and safeguarding.
---	--

2. CHILD PROTECTION PROCEDURES

In school we follow the procedures set out in interagency procedures produced by [North Tyneside's Safeguarding Children Board \(NTSCB\)](#). We are aware of these procedures and ensure that they are incorporated into the practice, policy and procedures that we operate in school.

We will contact North Tyneside's Front Door Service (see the information attached at the end of this policy - contact details) as the first point of contact with Children's Social Care for concerns about the safety or welfare of a child/young person in North Tyneside. We understand that the Front Door Service is the access point to the MASCT (Multi Agency Screening and Co-ordination Team) which has a duty team who offer information, support and services including information about early help and will respond to concerns.

In school, we ensure that all staff are aware that they have a professional responsibility to share information with other professionals and agencies in order to safeguard children/young people. All staff are aware of confidentiality protocols, adhere to these and ensure that information is shared appropriately. In school we all understand the need for and respect the appropriateness

of the Head Teacher or DSL (or any deputies) or Designated Teacher for Looked After Children (LAC) disclosing any information about a pupil to other members of staff on a need to know basis only.

In school, we ensure that all staff are aware that any information a child/young person discloses regarding harm/abuse of themselves or of another child/young person must be shared as appropriate, and cannot be kept secret. In addition to our overarching principles which operate to ensure child protection is effective we also have 5 areas of focus. We believe as a Governing Body that this ensures child protection procedures are easier to understand for ALL and better ensures we are operating our child protection procedures effectively. Each area of focus is of equal importance:

- Training & Awareness for All
- Role & Responsibilities of the DSL & Deputy DSLs
- Safeguarding in Practice
- Working with Others
- Teaching & Learning and the Curriculum

In our school the Governing Body ensures:

<u>Overarching Principles:</u>	<ul style="list-style-type: none"> • we have a DSL for Child Protection who is part of the school’s senior leadership team • the DSL takes lead responsibility for safeguarding and child protection and this is explicitly noted in their job description and whilst some of the activities of this role may be delegated to appropriately trained and experienced deputies, however, the ultimate lead responsibility for safeguarding and child protection remains with the DSL as this cannot be delegated • the DSL and their Deputies will undertake appropriate North Tyneside Safeguarding Children Boards (NTSCB) training every two (2) years • we have three appropriately trained and experienced Deputy DSL’s (Dp DSL’s) in school and these arrangements are clearly communicated to staff, agency workers, volunteers and governors • staff, agency workers, volunteers and governors are clear where they have a concern or a query relating to a child/young person that they need to contact the DSL/Dp DSL in school ¹ • all staff, agency workers, volunteers, governors and other adults supporting/working in school knows what to do if they have any concerns about a child, including referring the matter to the DSL/Dp DSL’s and are also aware that irrespective of the arrangements in school, any staff member can make a referral to Children’s Social Care • all staff, agency workers, volunteers, governors and other adults supporting/working in school are provided with an immediate induction relevant to their role in school, this
--------------------------------	---

¹ For service providers staff based in school we are clear that those staff are also clear on appropriate reporting protocols which have been issued to their staff and how this aligns into our school policy.

	<p>induction will then increase as appropriate linked to their role in school and the expected duration of that role</p> <ul style="list-style-type: none"> • all staff, agency workers, volunteers and governors will be provided with a copy of our child protection policy, safeguarding arrangements, code of conduct/behaviour protocols for staff and the whistle blowing policy and will be supported and then expected to understand how these policies and guidance documents apply to their role in school • all staff, agency workers, volunteers and governors will be provided the names and contact arrangements of the DSL/Dp DSL, Children's Social Care and the NSPCC Whistle blowing Help line. This list will be reviewed termly by the DSL to ensure that it remains up to date and any necessary updates notified to ALL immediately (attached as Reference Document A) • all visitors will be required to sign in at reception in accordance with our visitor's protocol and will be required to operate within the conditions contained in this document. In addition to child protection, safeguarding and health and safety, this visitor's protocol is noted as being our part of our 'induction' for visitors • ensure all staff, agency workers, volunteers and governors are aware of the need to maintain appropriate and professional boundaries in their relationships with pupils and parents. We will support this practice via induction and periodic training/updates to support a practical understanding of the guidance that school provides on safe working practices • all staff, agency workers, volunteers and governors will be assigned an 'induction' mentor for a set period of time following their appointment within school. The duration of the 'induction period' set will be tailored to suit the role and the time duration of the role that each individual will be undertaking in school • the DSL and Dp DSL's are issued with an appropriate job description/role clarity for this role which incorporates Annex B of Keeping Children safe in Education (KCSE 2016) • staff understand and recognise the importance of the role of the DSL/Dp DSL. In addition to this all staff understand their own professional and personal duties and responsibilities in relation to this role • the DSL/Dp DSL takes advice from the North Tyneside Front Door service when managing cases where there is or may be a concern that warrants further support or intervention in line with the North Tyneside Threshold Guidelines • this policy is accessible to ALL, is placed on both the schools IT system and paper copies will also be available in school for colleagues to access who do not have day-to-day access to a school network/PC (these are held in the main office, school kitchen and technical services departments) • this policy and its associated guidance is reviewed by the
--	--

	<p>governing body annually and/or following a required review and the lead responsibility for ensuring that this happens is assigned to the DSL</p> <ul style="list-style-type: none"> • as a Governing Body we receive a confidential annual report from the DSL and the Safeguarding Governor to provide updates of the practice that operates in school, including any changes linked to legislation/good practice and our schools own developments/feedback from staff and to provide assurance to the Governing Body that both safeguarding and child protection is operating effectively at all levels in school. The school will also complete the NTSCB Section 11 audit to further evidence that safeguarding arrangements are effective • parents have an understanding of the responsibility placed on school and staff for child protection, this is achieved in school as we clearly communicate our policy in information provided to parents and ensure our Child Protection Policy is published on the website.
--	---

<p><u>Training & Awareness for ALL</u></p> <p>The DSL for child protection in school will ensure all relevant persons – who in school, we define to include all staff, agency workers and volunteers (including Governors) who have contact with children/young people</p>	<ul style="list-style-type: none"> • will know the name of the DSL/DP DSL's, their roles, contact details and who they are – to achieve this the DSL will as a minimum issue contact details outlined at the end of this policy to ALL and will ensure that this information is reviewed/updated and re-issued termly as appropriate • all staff will be provided with basic child protection training (by the DSL or deputy DSL), immediately that they are appointed/placed in school and then attend NTSCB endorsed child protection training for school based staff within a half term. • all staff will receive NTSCB endorsed child protection training for school based staff at least every three (3) years • the 3 yearly training offered to all staff will also be made available to volunteers and governors who have direct contact with children/young people and also any agency workers who are on placement with school at the point of time the training is delivered will also be included in the attendance • ALL will also receive regular safeguarding and child protection updates (regularly but at least annually) from the DSL and the Dp DSL's which is in line with advice and changing practice – both nationally and from NTSCB ¹ • the DSL and the Dp DSL's will attend NTSCB Multi Agency Training every two (2) years for the child protection • the DSL/Dp DSL are supported to update their knowledge and
---	--

¹ ¹ For service providers staff based in school we are clear that those staff are also support to understand how their employers policy and practices align into our school policy and safeguarding culture.e.

	<p>skills on a periodic basis. This will be achieved by them accessing e-bulletins, briefings, network meetings etc via their appraisal/mentor process and in taking time to read and digest safeguarding developments</p> <ul style="list-style-type: none"> • opportunities are provided for staff to contribute to and shape safeguarding arrangements and child protection policy and protocols • ALL are provided with additional reference documents – included within our policy to ensure that they understand: <ul style="list-style-type: none"> ○ who to contact when they have a concern (attached as Reference Document A) ○ guidance for staff on receiving a disclosure and actions to take when there are concerns about a child (attached as reference document B) ○ Key concepts and definitions relating to significant harm, the categories of harm and abuse, Early help and signposts to further reading on specific safeguarding issues (attached as reference document C) ○ information relation to the other policies that operate in school which support safeguarding and child protection (attached as reference document D) • in accordance with KCSE2016 ¹ linked to research from Serious Case Reviews, where it has been shown the dangers of failing to take corrective action, poor practice has included failing to act on and refer the early signs of abuse and neglect, poor record keeping, failing to listen to the views of the child, failing to re-assess concerns when situations do not improve, sharing information too slowly and a lack of challenge to those who appear to be taking action does not occur in school; we have in place practices to ensure that all concerns, discussions and decisions made and the reasons for those decisions is recorded in writing. Where staff have doubts they are clear that they must talk to the DSL or the Dp DSL's who will ensure that information is appropriately recorded, reviewed and any necessary actions taken.
--	--

<p><u>Role & Responsibilities of the DSL</u></p> <p>The DSL is clear on their role and responsibilities for safeguarding and child protection, understands that they cannot delegate this responsibility and in</p>	<ul style="list-style-type: none"> • the DSL and the Dp DSL's are responsible for ensuring that ALL are issued with a copy of KCSE2016 - Information for all school and college staff (Part ONE) September 2016 (and Annex A where appropriate) or upon their appointment/placement in school should it be after this date, and ensure that individuals have read, understood and are able to discharge their role and responsibilities as set out in this document • issue to all staff as part of this procedure a copy of page 10 of KCSE2016 – actions where there are concerns about a child
--	--

¹ new learning from serious case reviews: a two year report for 2009-2011

<p>carrying out this role they are clear on what they are responsible for which ensures that all relevant persons in school are also clear on the role of the DSL and Dp DSL's</p>	<p>(and attached as reference document B as part of the overall staff briefing in September 2016 as noted above) and upon their appointment/placement in school should it be after this date and ensure that individuals have read, understood and are able to discharge their role and responsibilities as set out in this referral guide</p> <ul style="list-style-type: none"> • to ensure that all policies, procedures, guidance and practice are in place in school to ensure effective safeguarding and child protection and to ensure that those policies, procedures, guidance and practice are updated and implemented in a timely way • work with the Local Authority, NTSCB and other agencies to ensure that we are able fulfil our duties and responsibilities in relation to Safeguarding and Child Protection arrangements, which will include but not be limited to completion of an annual return e.g. including a NTSCB Section 11 audit. • work to develop effective links with relevant agencies and co-operate as required with their enquiries regarding welfare and child protection matters including attendance and written reports at Initial Child Protection Conferences, core groups/care team meetings, Child Protection Review Conferences, Locality Allocation Meetings and Team Around the Family (TAF) meetings which are part of the early help process • ensure that clear detailed written records of concerns about children (noting the date, event and action taken), even where there is no need to refer the matter to Children's Services immediately are maintained appropriately in school • ensure all records are kept to the required standard/guidance, are secure, have limited access and in locked locations • to work closely with the Safeguarding Governor to ensure that they are clear on their role and responsibilities in relation to safeguarding and to work within them throughout the year and in production of the annual report to Governors and the NTSCB Section 11 audit
---	--

<p><u>Safeguarding _____ in Practice</u></p> <p>The DSL will ensure all relevant persons:</p>	<ul style="list-style-type: none"> • know that they have a professional responsibility for sharing concerns about a child's safety and welfare with the DSL/Dp DSL in school and understand their personal responsibility with regards to safeguarding and child protection matters in school • understand that school staff are in an important position to identify concerns early and provide help for children, where relevant and linked to the <u>NTSCB thresholds document</u> to prevent concerns escalating • ensure that all staff know what to do if a child tells them he/she is being abused or neglected and how to maintain appropriate levels of confidentiality whilst at the same time liaising with the DSL, the Dp DSL's or children's social care. Staff should be
--	--

	<p>aware that they should never promise a child that they will not tell anyone about an allegation – as this may ultimately not be in the best interests of the child.</p> <ul style="list-style-type: none"> • for teaching staff - the DSL and Dp DSL's will ensure that each teacher understands their professional duties linked to Teachers Standards and what is expected of them as a teaching professional • know that if a child/young persons situation does not appear to be improving the adult with concerns should press for 'reconsideration' – and should clearly understand what this means and how this operates within the context of the child protection policy • understand the need to be vigilant in identifying cases of harm/abuse and are able to immediately report concerns when they arise; • know that information a child/young person discloses regarding harm/abuse of themselves or another child/young person must be shared as appropriate, and cannot be kept secret. • know how to support and to respond to a child/young person who tells of harm/abuse or other matters that have the potential to be a cause for concern/harm • ensure confidentiality protocols are adhered to and information is shared appropriately • understands that the Head teacher, DSL or the Dp DSL in school will disclose any information about a pupil to other members of staff on a need to know basis only • recognise their duty and feel able to raise concerns about poor or unsafe practice in regard to children/young people and know that those concerns will be: <ul style="list-style-type: none"> • addressed • managed sensitively and effectively • dealt with in a timely manner • dealt with in accordance with schools agreed policies/practices, including Whistle blowing Policy. • understand that if they have a concern about another adult in school (including agency workers, volunteers, governors, other staff/adults – including but not limited to Local Authority, Health, etc) they must refer the matter to the Head Teacher (whose contact details are noted at the end of this document). Where the concerns are about the Head Teacher, they should refer the matter to Chair of Governors (whose contact details are noted at the end of this document) - as outlined in Part 4 of KCSE2016 and as noted to all adults in school as part of induction and training protocols • ensure that staff are able to recognise that children are capable of abusing their peers and ensure that the child protection arrangements in school have in place procedures to minimise the risk of peer on peer abuse and how such allegations are
--	--

	<p>managed. Our policy in school reflects the different forms peer on peer abuse can take, is clear that this is abuse and will not be tolerated. The policy also notes how victims of peer on peer abuse will be supported in school</p>
--	---

<p><u>Working with Others</u></p> <p>The DSL for child protection in school will co-ordinate and lead on the following:</p>	<ul style="list-style-type: none"> • undertaking appropriate discussion with parents prior to involvement of another agency unless doing so would place the child/young person at risk of further significant harm • contacting the North Tyneside Front Door service for information, advice, guidance (including the early help pathway) or to make a referral where there are concerns about harm a child/young person • ensuring that all relevant persons who have contact with children/young people know what to do if they have any concerns about a child, including referring the matter to the DSL or the Dp DSL • ensuring that any staff member is aware that they can make a referral to Children’s Social Care Front Door Service • reporting an unexplained school absence to the child/young person’s Social Worker or Front Door where there is a pupil who is subject to a child protection plan or a Looked After Child - the Designated Teacher for Looked After Children (LAC) must also be informed, and confirm that this will operate as a first day response or as agreed as part of any inter-agency plan in place • ensuring that the school have in place a Designated Teacher for LAC and that their contact details are noted in the information attached at the end of this policy • work with the Virtual School Head within the Local Authority to discuss and agree how funding can best be used to support the progress of LAC in school and meet the needs identified in the child’s personal education plan • recognise that children with special educational need (SEN) and disabilities can face additional safeguarding challenges. The child protection procedures and practices which operate in school reflect the fact that additional barriers can exist when recognising abuse and neglect in this group of children • operational policy and practice in school reflects and provides for children to have learning experiences including care and accommodation, for short periods of time, by a host family to which they are not related at set out in Annex E of KCSE 2016
---	---

<p><u>Teaching & Learning</u></p> <p><u>and</u></p>	<ul style="list-style-type: none"> • children are taught about safeguarding, including online, through teaching and learning opportunities, as part of providing a broad and balanced curriculum. This may include covering relevant issues through personal, social, health and
---	---

<p><u>Curriculum</u></p> <p>The DSL will be required to ensure:</p>	<p>economic education (PSHE) including sex and relationship education (SRE)</p> <ul style="list-style-type: none"> • that as we increasingly work on line we ensure that our children are safeguarded from potentially harmful and inappropriate online material. We have appropriate filters and monitoring systems in place • the appropriate filters and monitoring systems that we have in place do not “over block”, nor do they lead to unreasonable restrictions as to what children can be taught with regards to online teaching and safeguarding • in accordance with Annex C of KCSE2016 we have in place a policy that recognises that technology has become a significant component of many safeguarding issues. We have in place an effective approach to online safety which empowers school to protect and educate the whole school community in the use of technology and have established mechanisms to identify, intervene and escalate any incident where appropriate • staff have an awareness of risk taking behaviours linked to the likes of drug taking, alcohol abuse, truanting and sexting which put children in danger • staff have an awareness issues can manifest themselves via on peer abuse. This is most likely to include, but not limited to: bullying (including cyber bullying), gender issues and gender, based violence/sexual assaults and sexting (the act of sending sexually explicit photos, messages, voicemails, IM’s, videos, etc either via phone, computer, webcam or other devices. Guidance is available in <u>Sexting in schools and colleges: Responding to incidents and safeguarding young people.</u> • staff are clear as to the school policy and procedures for managing peer on peer abuse
---	---

3. SUPPORTING PUPILS

In school we recognise that children/young people, who are harmed, abused or witness violence/abuse may find it difficult to develop a sense of self worth, they may feel helplessness, humiliation and some sense of self-blame.

School may be the only stable, secure and predictable element in the lives of children/young person at risk. Nevertheless, when at school their behaviour may be challenging and defiant or they may be withdrawn. We recognise that some children/young people actually adopt abusive behaviours and that these children/young people must be referred on for appropriate support and intervention.

<p>In school we will endeavour to support the pupil through:</p>	<ul style="list-style-type: none"> • the content of the curriculum to encourage self esteem and self motivation • the school ethos which promotes a positive, supportive, and secure environment and gives pupils a sense of being valued
--	---

	<ul style="list-style-type: none"> • the school's behaviour policy which is aimed at supporting vulnerable pupils in school • ensuring all staff being aware of their responsibility to provide a consistent approach, which focuses on the behaviour of the offence committed by the child/young person, but does not damage the pupil's sense of self worth • endeavouring to ensure that the pupil knows that some behaviour is unacceptable but that s/he is valued and not to be blamed for any harm/abuse, which has occurred • liaison with other agencies which support the pupil such as Children's Services, Integrated Locality Team within the LA, Child and Adolescent Mental Health Services (CAMHS), the Educational Psychology Service, Behaviour Support Services and the Education Welfare Service • a commitment to develop productive and supportive relationships with parents whenever it is in a pupil's best interest to do so • recognition that children/young people living in a home environment where there is risk, e.g. domestic abuse, drug or alcohol abuse, other health or wellbeing concerns, are vulnerable and in need of support and protection • vigilantly monitoring children/young people's welfare, keeping records (separate to child/young person's school record and in accordance with the schools record management practices) and notifying Children's Services <u>as soon as there is a recurrence of a concern</u> • ensuring that when a pupil subject to a child protection plan leaves, information will be transferred to the new school immediately – in accordance with KCSE2016 – this will be transferred separately from the main pupil file, ensuring secure transit and confirmation of receipt will be obtained
<p><u>Special Educational Needs (SEN) and Disability</u></p>	<p>We recognise that statistically children/young people with disabilities and/or behavioural difficulties are more vulnerable to harm/abuse. School staff who deal with children/young people with disabilities, sensory impairments and/or emotional and behaviour problems recognise that these children can face additional safeguarding challenges such as</p> <ul style="list-style-type: none"> • assumptions that indicators of possible abuse such as behaviours, mood and injury automatically relate to a child's disability without further exploration • that children with SEN and disabilities can be disproportionately impacted by things like bullying – without outwardly showing any signs; and • communication barriers and difficulties in overcoming these barriers

4. PREVENTING UNSUITABLE PEOPLE FROM WORKING WITH CHILDREN/YOUNG PEOPLE

<p>In school we will:</p>	<ul style="list-style-type: none"> • operate Safe Recruitment practices including ensuring appropriate Data Barring Service (DBS) and reference checks are undertaken according to KCSE2016 for all staff, agency workers and volunteers (including Governors) before individuals are appointed or placed into school • ensure that at least one member of the governing body and the Head teacher is trained in Safe Recruitment Practices • ensure that all Governors have in place an enhanced DBS certificate within 21 days of their appointment. • ensure all other relevant NTSCB, DfE and Ofsted safeguarding requirements, advice and guidance will be adhered to • Allegations Management: <ul style="list-style-type: none"> ○ implement Guidance for Dealing with Allegations of Abuse Against Staff and Safer Working Practices for Adults who work with Children and Young People and all other relevant Safeguarding and Child Protection policies. ○ in the event of an allegation against staff, school will consult with the Designated Officer in the Local Authority (referred to as the LADO) – see the information attached for contact details • ensure that any proceedings against staff relating to child protection matters are concluded in full even where the member of staff is no longer employed at the school and that notification of any concerns is made to the relevant authorities, professional bodies and included in references where applicable • ensure that all staff, agency workers and volunteers (including Governors) are aware of the need for maintaining appropriate and professional boundaries in their relationships with pupils and parents • ensure that staff, agency workers and volunteers (including Governors) are aware that sexual relationships between them and pupils aged under-18 are unlawful and could result in legal proceedings taken against them under the Sexual Offences Act 2003 (Abuse of position of trust)
---------------------------	--

Reference Document A

Longbenton High School

Contact Details for Child Protection and Safeguarding as at: September 2017

(these details will next be reviewed on a termly basis to ensure that they remain relevant)

Designation/Role	Contact Details	
Head Teacher	Name: Mr Paul Quinn Telephone(s): 01912189500 Email: pg@lblearning.com Mobile(s):	
Chair of Governors	Name: Mr S Houghton Telephone(s): 01912189500 Email: lhs@lblearning.com Mobile(s):	
Designated Safeguarding Lead:	Name: Mrs Kelly Holbrook Telephone(s): 01912189500 Email: kho@lblearning.com Mobile(s):	
Deputy Designated Safeguarding Lead:	Name: Mrs Val Short Telephone(s): 01912189500 Email: vs@lblearning.com Name: Ms S Wood Telephone(s): 01912189500 Email: swo@lblearning.com Mobile(s): Name: Mr Ian Williams Telephone(s): 01912189500 Email: iw@lblearning.com Mobile(s):	
Designated Teacher for Looked After Children	Name: Mr Ian Little Telephone(s): 01912189500 Email: il@lblearning.com Mobile(s):	
Designated Safeguarding Governor:	Name: Mrs Lydia Aird Telephone(s): 01912189500 Email: lhs@lblearning.com Mobile(s):	
Designated Officer – Local Authority	Contact: Majella Tallack Contactable through the Front Door Service-See below	
Front Door	0345 2000 109	
Out of Hours	0191 200 6800	
Adult Social Care Gateway Team	0191 6432777	
Police	Emergency 999 Non-emergency number 101	
Prevent Duty	Dedicated DFE Prevent line 020 7340 7264	
NSPCC National Whistle Blowing Help Line:	0800 028 028 5 help@nspcc.org.uk	
Integrated Locality Teams:	North West Locality manager: Nicky Garner Based at Shiremoor Children's Centre -6438966	South West Locality manager: Julie Connolly Based at Howdon Children's Centre-643 6262
	The Coast Locality manager: Lesley Davies Based at Whitley Bay Customer First Centre-6438804	Central Locality manager: Bev Marrs Based at Riverside Children's Centre-643 8266

Reference Document B

Guidance for staff on receiving a disclosure/allegation

RECEIVE

- React calmly; be aware of your non verbal messages.
- If you don't understand the child's communication method, reassure the child, and find someone who can.
- Don't interrogate the child, observe and listen, use active listening techniques.
- Don't stop a child who is freely recalling significant events.
- Keep responses short, simple, slow, quiet and gentle.
- Don't end the conversation abruptly.

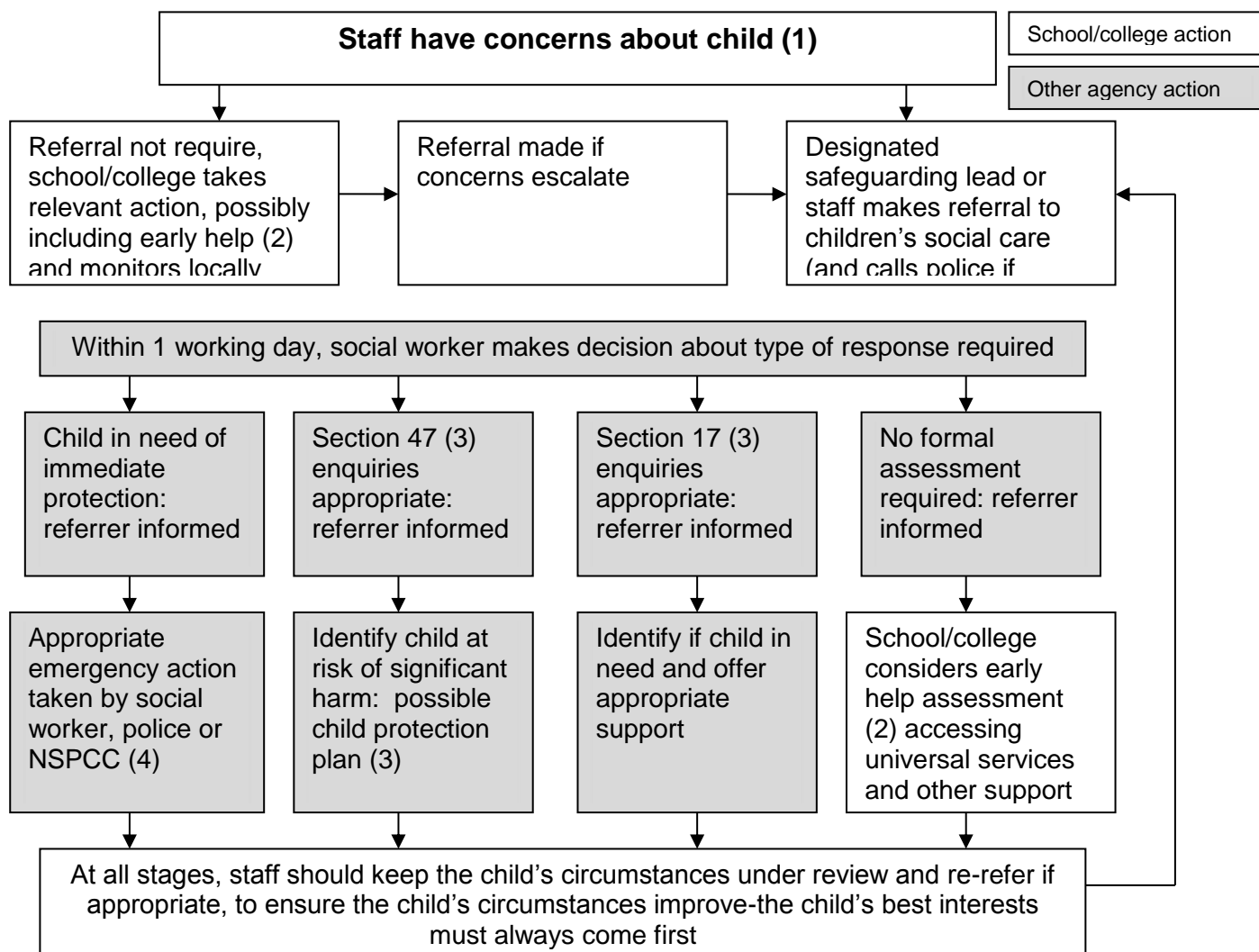
REASSURE

- Tell the child they are not to blame; and have done the right thing by telling you.
- Tell the child what will happen next; be honest about what you can and can't do.
- Don't promise confidentiality; say to the child, 'Some things are so important I might have to tell them to somebody else'.

REACT

- Explain what you have to do next and whom you have to tell.
- Inform the Designated Safeguarding Lead (DSL) or deputy DSL immediately.

Actions where there are concerns about a child (from KCSE 2016)



Reference Document C

Key concepts and definitions

Child Protection – is a part of safeguarding and promoting welfare. This refers to the activity, which is undertaken, to protect specific children who are suffering or at risk of suffering significant harm.

Effective child protection is essential as part of wider work to safeguard and promote the welfare of children. However all agencies and individuals should aim to proactively safeguard and promote the welfare of children so that the need for action to protect children from harm is reduced.

Children in need – Children who are defined as being ‘in need’, under section 17 of the Children Act 1989, are those whose vulnerability is such that they are unlikely to reach or maintain a satisfactory level of health or development, or their health and development will be significantly impaired, without the provision of services (section 17(10) of the Children Act 1989), plus those who are disabled. The critical factors to be taken into account when deciding whether a child is in need under the Children Act 1989 are what will happen to the child’s health or development without services being provided, and the likely effect the services will have on the child’s standard of health and development. Local Authorities have a duty to safeguard and promote the welfare of children in need.

The concept of significant harm – Some children are in need because they are suffering or likely to suffer significant harm. The Children Act 1989 introduced the concept of significant harm as the threshold that justifies the compulsory intervention in family life in the best interests of children, and gives local authorities a duty to make enquiries to decide whether they should take action to safeguard or promote the welfare of a child who is suffering, or likely to suffer significant harm.

There are no absolute criteria on which to rely when judging what constitutes significant harm. Consideration of the severity of ill-treatment may include the degree and extent of physical harm, the duration and frequency of harm/abuse and neglect, the extent of premeditation, and the presence and degree of threat, coercion, sadism, and bizarre or unusual elements. Each of these elements has been associated with more severe effects on the child, and/or relatively greater difficulty in helping the child overcome the adverse impact of the maltreatment. Sometimes, a single traumatic event may constitute significant harm, e.g. a violent assault, suffocation or poisoning. More often, significant harm is a compilation of significant events, both acute and longstanding, which interrupt, change or damage the child’s physical and psychological development. Some children live in a family and in social circumstances where their health and development are neglected. For them, it is the corrosiveness of long term emotional, physical or sexual harm/abuse that causes impairment to the extent of constituting significant harm. In each case, it is necessary to consider any maltreatment alongside the family’s strengths and supports.

Definitions from Working Together to Safeguard Children (2015)¹

A guide to inter-agency working to safeguard and promote the welfare of children

Abuse – a form of maltreatment of a child. Somebody may abuse or neglect a child by inflicting harm or by failing to act to prevent harm. Children may be abused in a family or in an institutional or community setting by those known to them or, more rarely, by others (e.g. via the internet). They may be abused by an adult or adults or another child. (KCSE 2016 Page 11, types of abuse or neglect).

¹ Working Together guidance to be revised – likely formal consultation around November 2017, and implementation in early 2018

Physical Harm/Abuse - A form of abuse which may involve hitting, shaking, throwing, poisoning, burning or scalding, drowning, suffocating or otherwise causing physical harm to a child. Physical harm may also be caused when a parent or carer fabricates the symptoms of, or deliberately induces, illness in a child.

Emotional Harm/Abuse - The persistent emotional maltreatment of a child such as to cause severe and persistent adverse effects on the child's emotional development. It may involve conveying to a child that they are worthless or unloved, inadequate, or valued only insofar as they meet the needs of another person. It may include not giving the child opportunities to express their views, deliberately silencing them or 'making fun' of what they say or how they communicate. It may feature age or developmentally inappropriate expectations being imposed on children. These may include interactions that are beyond a child's developmental capability, as well as overprotection and limitation of exploration and learning, or preventing the child participating in normal social interaction. It may involve seeing or hearing the ill-treatment of another. It may involve serious bullying (including cyber bullying), causing children frequently to feel frightened or in danger, or the exploitation or corruption of children. Some level of emotional abuse is involved in all types of maltreatment of a child, though it may occur alone.

Sexual Harm/Abuse - Involves forcing or enticing a child or young person to take part in sexual activities, not necessarily involving a high level of violence, whether or not the child is aware of what is happening. The activities may involve physical contact, including assault by penetration (for example, rape or oral sex) or non-penetrative acts such as masturbation, kissing, rubbing and touching outside of clothing. They may also include non-contact activities, such as involving children in looking at, or in the production of, sexual images, watching sexual activities, encouraging children to behave in sexually inappropriate ways, or grooming a child in preparation for harm/abuse (including via the internet). Sexual harm/abuse is not solely perpetrated by adult males. Women can also commit acts of sexual harm/abuse, as can other children.

Neglect - The persistent failure to meet a child's basic physical and/or psychological needs, likely to result in the serious impairment of the child's health or development. Neglect may occur during pregnancy as a result of maternal substance abuse. Once a child is born, neglect may involve a parent or carer failing to:

- provide adequate food, clothing and shelter (including exclusion from home or abandonment);
- protect a child from physical and emotional harm or danger;
- ensure adequate supervision (including the use of inadequate care-givers); or
- ensure access to appropriate medical care or treatment.

It may also include neglect of, or unresponsiveness to, a child's basic emotional needs.

Further reading and specific safeguarding advice

To ensure understanding of key concepts and definitions and specific safeguarding issues,

- all staff ***must*** read **Part One of Keeping Children safe in Education (KCSE) 2016**

and,

- all staff working directly with children, must also read **Annex A of Keeping Children safe in Education (KCSE) 2016**

Annex A of KCSE2016 outlines further information on specific safeguarding issues including;

- a child missing from education

- child sexual exploitation (CSE)
- so called 'honour based' violence (HBV) which includes but is not limited to,
 - Female genital mutilation (FGM) which now has a mandatory reporting duty placed on teachers
 - Forced marriage
 - Breast ironing
- Preventing radicalisation including
 - The Prevent Duty
 - Channel guidance

Other specific safeguarding advice can be accessed via the links at the end of this policy, in Keeping Children Safe in Education (Sept, 2016) or through GOV.UK and other government websites.

These include but are not limited to *domestic violence, fabricated or induced illness, faith abuse, gangs and youth violence, gender-based violence/violence against women and girls (VAWG), hate crimes, mental health, missing children and adults, private fostering, relationship abuse, sexting and trafficking.*

What is the Early Help Assessment (EHA)? - An EHA provides an assessment when a child or young person and their family are identified as needing some additional help and it is thought they would benefit from coordinated support from more than one agency. An EHA provides an opportunity for the whole family to consider and prioritise their needs and build on their strengths within the context of their own family.

The approach is one where practitioners come together to share information to find out what support is required and work as a team around the family. A single SMART action plan will be developed and progress will be reviewed regularly.

It is an assessment tool and as such it is not about making referrals, requests for additional services or used to pass families to another practitioner or team. It is not about form filling; it is about having a meaningful conversation with a family about their strengths and challenges, working out what they need and identifying the right people to provide the right support at the right time.

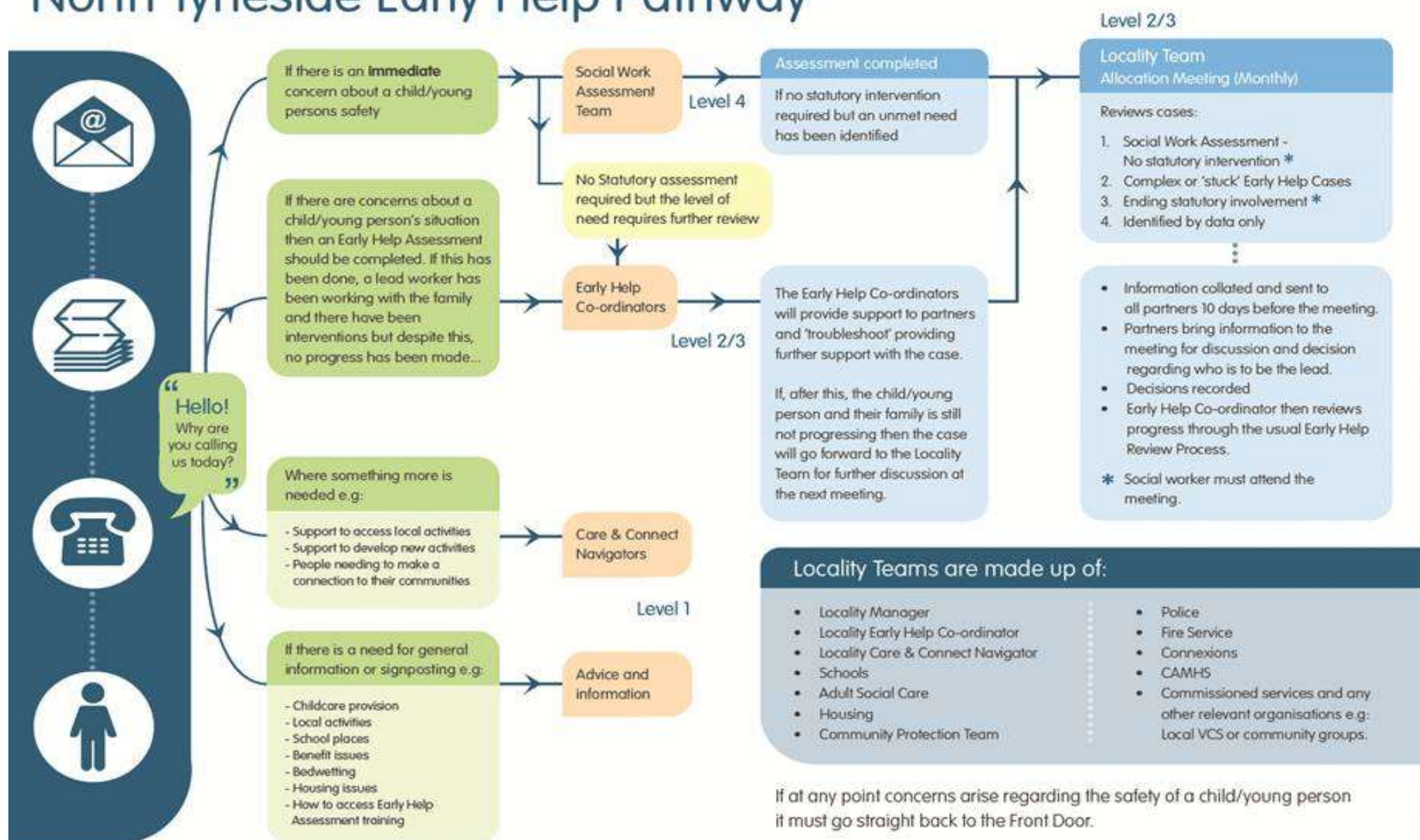
When concerns arise, school should consider the [North Tyneside Safeguarding Children Board's Threshold document](#), and where a child's needs are thought to be at an appropriate level for early help, the school should undertake an EHA to identify what help the child and family require and prevent the needs escalating to a point where intervention would be needed via a statutory assessment.

If at any stage during the EHA process, there are worries that a child or young person has been harmed or is at risk of harm, normal safeguarding procedures must be followed and school must contact the Front Door

The lead person for engaging in the process of EHA will be determined in each school with a named staff member being identified, however this does not exclude other members of school staff being asked to contribute to the assessment or becoming the lead worker in the early help process.

Professionals can ring the Early Help and Co-ordination Team or the Front Door to find out if an EHA already exists for a child/family and for further information on the early help process. Each school is also linked to an Integrated Locality team. Contacts can be found in the school's full child protection policy.

North Tyneside Early Help Pathway



Reference Document D

Links to other procedures in School

This policy does link to other school procedures and therefore must be read in conjunction with other related policies and procedures in school. This includes, but is not limited to the following,

- Bullying (Student conduct -including racist, disability, and homophobic or transphobic abuse)
- Allegations against staff
- Arrangements for those educated in alternative provisions
- Attendance management
- Behaviour for Learning (including exclusions)
- Complaints
- Confidentiality, data protection and information sharing
- E-safety and social networking
- Early Help/Early Intervention and Prevention
- Educational visits
- Equal Opportunities
- First aid
- Governing body code of conduct
- Health & Safety
- Special Educational Needs and Disability (SEND)
- Induction procedures
- Intimate care
- Lettings & school security
- Looked after children policy
- Managing medicines policy
- Missing children
- Pastoral Support plans
- Peer to Peer Abuse
- Physical intervention & use of reasonable force
- Promoting equality & diversity
- Sex and Relationships education
- Recruitment
- Staff code of conduct
- Visitors, agency workers and volunteers (including Governors)
- Whistle blowing

Part Three – Additional references for the DSL and Dp DSL’s only

Standards for effective child protection practice in schools

In schools which are noted as having in place best practice, they are able to demonstrate the following:

- have an ethos in which children feel secure, their viewpoints are valued, and they are encouraged to talk and are listened to;
- provide suitable support and guidance so that pupils have a range of appropriate adults to whom they can turn if they are worried or in difficulties;
- work with parents to build an understanding of the school’s responsibility to ensure the welfare of all children and a recognition that this may occasionally require children to be referred to investigative agencies as a constructive and helpful measure;
- are vigilant in cases of suspected child harm/abuse, recognising the signs and symptoms, have clear procedures whereby staff report such cases to the relevant person or service and are aware of local procedures so that information is effectively passed on to the relevant professionals;
- monitor children who have been identified as at risk, keeping, *in a secure place*, clear records of pupils’ progress, maintaining sound policies on confidentiality, providing information to other professionals, submitting reports to relevant meetings.
- provide and support child protection training regularly to school staff and to designated safeguarding leads and any deputies as outlined in KCSE2016 to ensure their skills and expertise are up to date, and ensure that targeted funding for this work is used solely for this purpose;
- contribute to an inter-agency approach to child protection by developing effective and supportive liaison with other agencies;
- use the curriculum to raise pupils’ awareness and build confidence so that pupils have a range of contacts and strategies to ensure their own protection and understand the importance of protecting others, taking into account **Sex and Relationship Education Guidance (2000)**: Statutory Guidance on sex and relationship education;¹
- provide clear policy statements for parents, staff and children and young people on this and on both positive behaviour policies and the schools approach to bullying;
- have a clear understanding of the various types of bullying - physical, verbal and indirect, and act promptly and firmly to combat it, making sure that pupils are aware of the schools position on this issue and who they can contact for support;
- take particular care that pupils with Special Educational Needs and/or Disability (SEND) in mainstream and special schools, who may be especially vulnerable to harm/abuse, are supported effectively with particular attention paid to ensuring that those with communication difficulties are enabled to express themselves to a member of staff with appropriate communicative skills;
- have effective safeguarding arrangements in place for those pupils who are educated in an alternative provision and recognise that school ultimately remains responsible for the safeguarding and welfare of pupils educated off-site.
- have a clear policy about the handling of allegations of harm/abuse by members of staff, ensuring that all staff are fully aware of the procedures and that they are followed correctly at all times, using the guidance in KCSE2016.
- have a clear policy about the handling of allegations of abuse made against other children, ensuring that all staff are fully aware of the procedures and that they are followed correctly at all times.
- have a written whole school policy, produced, owned and regularly reviewed by schools staff and which clearly outlines the school’s position and positive action in respect of the aforementioned standard.

¹ As a result of the decision to make relationships and sex education statutory, this document will be reviewed

References and useful sources of local and national information and advice

Schools need to ensure that the documents that they produce to support a safer culture in schools and child protection either include or have considered the information contained within these reference documents.

- Working together to Safeguard Children (2015)¹ A guide to inter-agency working to safeguard and promote the welfare of children
- Keeping children safe in education Sept 2016 (including information for all staff, management of safeguarding, safer recruitment and managing allegation against staff)
- North Tyneside Safeguarding Children Board (NTSCB) child protection/safeguarding procedures-click [here](#)
- North Tyneside Threshold Guidelines click [here](#)
- North Tyneside Safeguarding Children Board (NTSCB) Section 11 audit (NTSCB to circulate updated 2017-2018 version in autumn 2017 2016-2017 version available [here](#))
- Guidance for safer working practice for those working with children and young people in education settings Oct 2015-click [here](#)

Other useful websites

Andrew Hall Safeguarding in Schools www.safeguardingschools.co.uk

Child Protection in Education www.cape.org.uk

NSPCC www.nspcc.org.uk

CEOP www.ceop.police.uk

The Children's Legal centre www.childrenslegalcentre.com

The Children's Commissioner for England www.childrenscommissioner.gov.uk

Child line www.childline.org.uk/Pages/Home.aspx

Think you know www.thinkuknow.co.uk

Childhood bereavement www.childhoodbereavementnetwork.org.uk

Child Carers www.actionforchildren.org.uk/our-services/young-people/supporting-young-carers

FGM www.fgmelearning.co.uk/

NWG (National Working Group for CSE) <http://www.nwgnetwork.org/>

¹ Working Together guidance to be revised – likely formal consultation around November 2017, and implementation in early 2018

Further references and information

1. [Working together to Safeguard Children \(2015\)](#)
2. [Keeping children safe in education Sept 2016 - Publications - GOV.UK](#)
3. [What to do if you're worried a child is being abused. Advice for practitioners \(2015\)](#)
4. [Ofsted: Inspecting safeguarding in early years, education and skills settings \(2016\)](#)
5. [Information Sharing \(2015\)](#)
6. [The Prevent Duty \(2015\) Departmental advice for schools and childcare providers Prevent: Preventing Violent Extremism Strategy](#)
7. [The use of social media for online radicalisation](#)
8. [Behaviour and discipline in schools \(2016\)](#)
9. [Use of Reasonable Force \(2013\)](#)
10. [Searching, screening and confiscation: advice for schools \(2014\)](#)
11. [Sexual Offences Act 2003 \(Abuse of position of trust\)](#)
12. [Sex and Relationship Education Guidance \(2000\)¹](#)
13. [Sex and relationships education \(SRE\) for the 21st century](#)
14. [Preventing and tackling bullying](#)
15. [Safeguarding Children and young people from sexual exploitation](#)
16. [Sexting in schools and colleges: Responding to incidents and safeguarding young people](#)
17. [Safeguarding Children in whom illness is fabricated or induced](#)
18. [Private Fostering](#)
19. [Safeguarding Children from female genital mutilation-NT procedure](#)
20. [Safeguarding disabled children](#)
21. [Domestic violence and abuse](#)
22. [Operation Encompass Website](#)
23. [Forced Marriage](#)
24. [Safeguarding Children from abuse linked to faith or belief](#)
25. [The role and responsibilities of the designated teacher for looked after children](#)
26. [Children missing education Sept 2016](#)
27. [School attendance: Guidance for maintained schools, academies, independent schools and local authorities \(Nov 2016\)](#)
28. [Children who run away or go missing from home or care \(2014\)](#)
29. [School attendance parental responsibility measures \(Jan 2015\)](#)
30. [Staffing and employment advice for schools \(Feb 2017\)](#)
31. [Education Act 2002](#)
32. [Children's Act 1989](#)

All available from www.gov.uk , www.education.gov.uk or www.legislation.gov.uk

¹ As a result of the decision to make relationships and sex education statutory, this document will be reviewed